

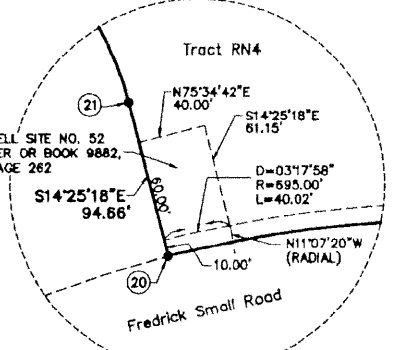
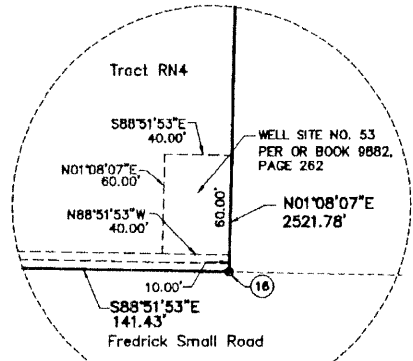
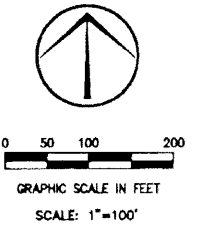
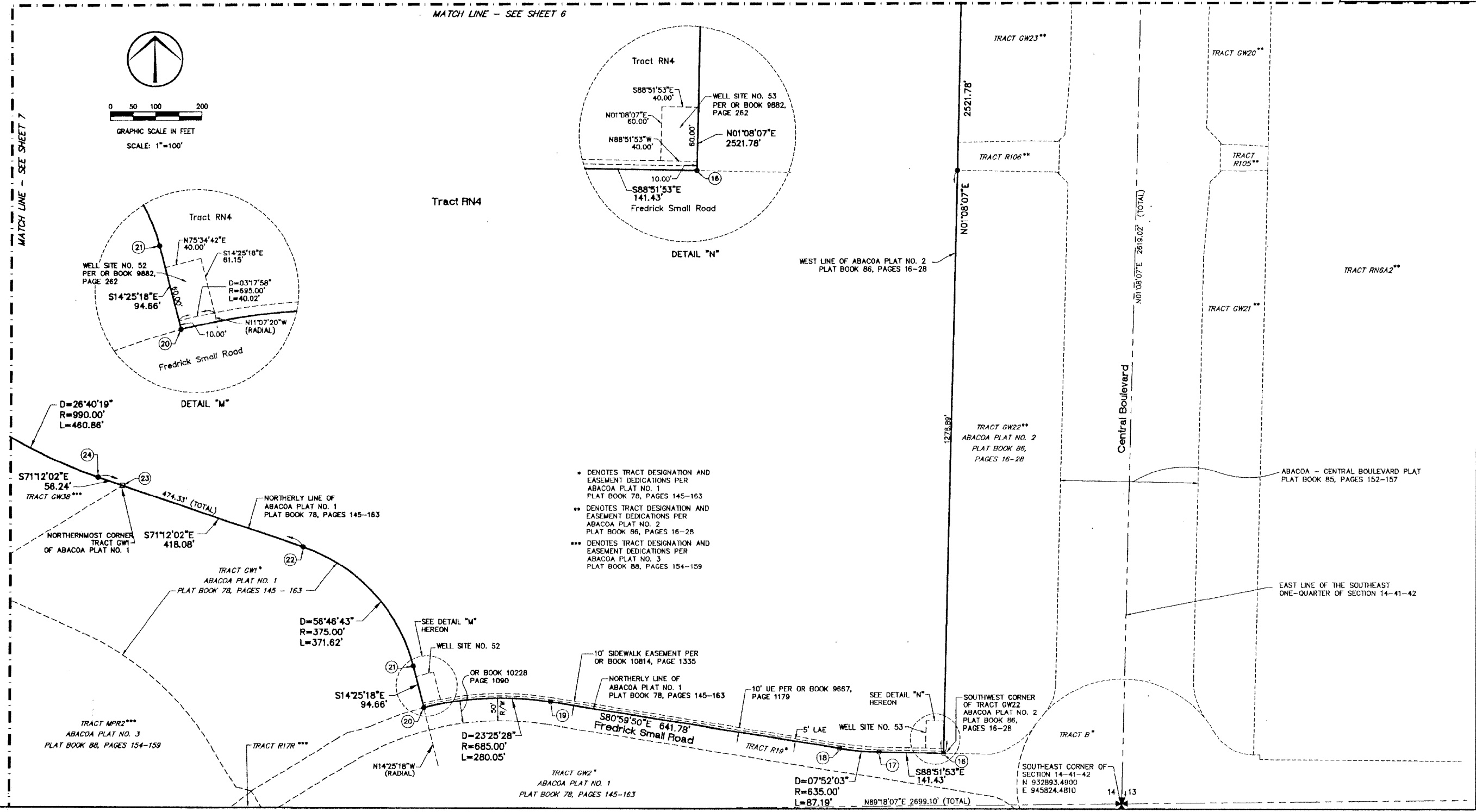
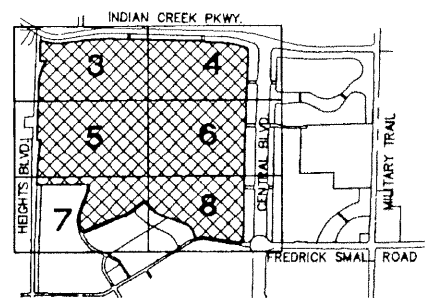
Abacoa - Plat No. 4

A Portion of Section 14, Township 41 South, Range 42 East and Being a Replat of a Portion of Tract PC2 of ABACOA PLAT NO. 1, as recorded in Plat Book 78, Pages 145 through 163, inclusive of the Public Records of Palm Beach County, Florida lying in the Town of Jupiter, Palm Beach County, Florida

This Instrument prepared by James E. Park, P.S.M.
Williams, Hatfield & Stoner, Inc. - Engineers Surveyors Planners Environmental Scientists
1901 South Congress Avenue, Boynton Beach, Florida 33426

April 2001

Sheet 8 of 8



- DENOTES TRACT DESIGNATION AND EASEMENT DEDICATIONS PER ABACOA PLAT NO. 1 PLAT BOOK 78, PAGES 145-163
- ** DENOTES TRACT DESIGNATION AND EASEMENT DEDICATIONS PER ABACOA PLAT NO. 2 PLAT BOOK 86, PAGES 16-28
- *** DENOTES TRACT DESIGNATION AND EASEMENT DEDICATIONS PER ABACOA PLAT NO. 3 PLAT BOOK 88, PAGES 154-159